

# Pilot operated check, dual

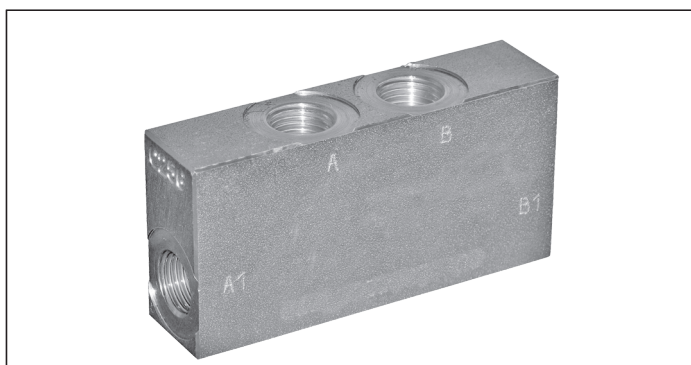
A-VSO-DE-LB

08.53.57 - X - Y - Z

**RE 18307-24**

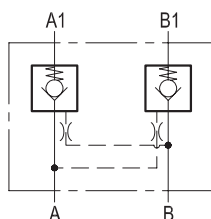
Edition: 03.2016

Replaces: 04.2010



## Description

Flow is allowed to pass in one direction (A to A1 or B to B1), then the valve remains closed (checked) in both reverse directions (A1 to A or B1 to B) in order to hold and lock in position the cylinder or other actuators; reverse flow is possible only when sufficient pilot pressure is applied at A or B, which act as cross connected pilot ports, and the pilot piston lifts the poppet from its seat overcoming cylinder port pressure.

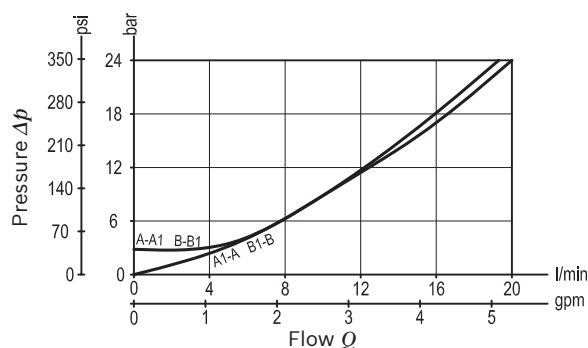


## Technical data

Max. operating pressure	350 bar (5000 psi)
Max. flow	20 l/min. (5 gpm)
Pilot ratio	4 : 1
Weight	0.45 kg (1 lbs)
Manifold material	Zinc plated steel
Fluid	Mineral oil (HL, HLP) according DIN 51524
Fluid temperature range	-30 °C to 100 (-22 to 212 °F)
Viscosity range	5 to 800 mm <sup>2</sup> /s (cSt)
Recommended degree of fluid contamination	Class 19/17/14 according to ISO 4406
Other technical data	see data sheet 18350-10

Note: for applications outside these parameters, please consult us.

## Characteristic curve



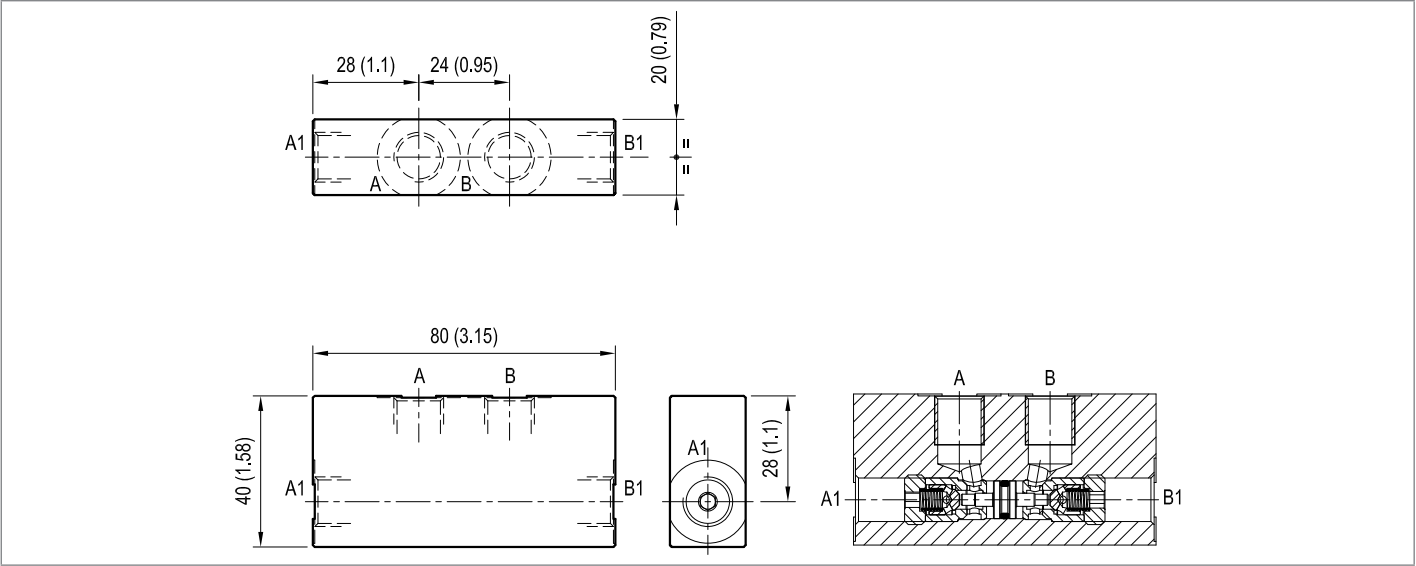
### Ordering code

08.53.57				X	Y	Z						
Pilot operated check, dual						<table><tr><th colspan="2">SPRINGS</th></tr><tr><th></th><th>Cracking pressure bar (psi)</th></tr><tr><td>00</td><td>3 (44)</td></tr></table>	SPRINGS			Cracking pressure bar (psi)	00	3 (44)
SPRINGS												
	Cracking pressure bar (psi)											
00	3 (44)											
O-Ring on pilot piston												
20 With damping, no O-Ring												
30 With damping, with O-Ring												
Port sizes	A - B	A1 - B1										
09	G 1/4	G 1/4										

## Preferred types

Type	Material number	Type	Material number
085357200900000	R930004079		
085357300900000	R930004080		

## Dimensions



**Bosch Rexroth Oil Control S.p.A.**  
Via Leonardo da Vinci 5  
P.O. Box no. 5  
41015 Nonantola – Modena, Italy  
Tel. +39 059 887 611  
Fax +39 059 547 848  
[compact-hydraulics-pib@boschrexroth.com](mailto:compact-hydraulics-pib@boschrexroth.com)  
[www.boschrexroth.com/compacthydraulics](http://www.boschrexroth.com/compacthydraulics)

© This document, as well as the data, specifications and other information set forth in it, are the exclusive property of Bosch Rexroth Oil Control S.p.a.. It may not be reproduced or given to third parties without its consent. The data specified above only serve to describe the product. No statements concerning a certain condition or suitability for a certain application can be derived from our information. The information given does not release the user from the obligation of own judgment and verification. It must be remembered that our products are subject to a natural process of wear and aging. Subject to change.